



# The Hyde School Newsletter

Spring Term: 6th March 2026



Dear Families,

I am pleased to share that our school Instagram page has now been launched. You can follow us at **@The\_Hyde\_School** to see updates, celebrations, and highlights from school life. Our social media lead is **Mokhi**, who will be helping to share all the wonderful things happening in our school community.

This week we celebrated **World Book Day**, and the theme was **Space**. The costumes were incredible and it was wonderful to see the children's creativity and enthusiasm. Thank you to all families for your support in helping the children take part. The children have also received **new books for their classrooms**, which they are very excited to start reading.

Next week we will be celebrating **British Science Week** with the theme "**Curiosity: What's your question?**". The children will be taking part in a range of exciting activities designed to encourage them to explore, investigate and ask thoughtful questions about the world around them.

We will also be hosting the **Scholastic Book Fair** in school next week. The book fair will be open **after school from 3:00pm to 3:45pm**, and we hope families will be able to come along and browse the fantastic selection of books available.

Thank you for your continued support.

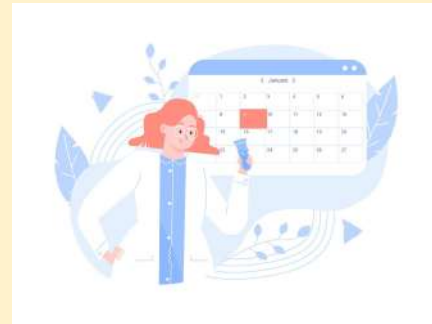
Ms Saving  
Headteacher

## Reminder

Your child needs to be in school as much as possible to support their learning.

Where possible, please ensure that routine appointments (doctors, dentist, opticians etc.) are booked outside of the school day.

Thank you for your support.



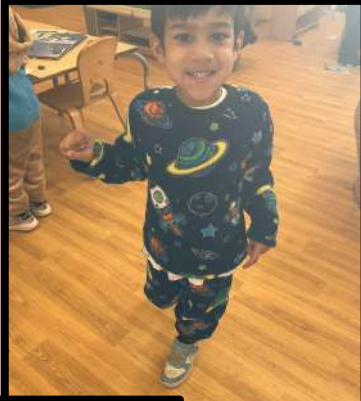
# Attendance Award

Because our attendance has been great for the last few weeks EVERY class will have a chance to win either BAS or BEA for the week! All class names are in a box and ONE will be picked out each week!



# Nursery

Nursery had lots of fun dressing up for World Book Day. We watched a video of an asteroid landing in our sandpit! Luckily, we had specialists on hand to help us investigate and observe what happened.



# Reception



We had great fun celebrating World Book Day yesterday! Reception looked amazing in their costumes. Nisha and Mokhi read us books at carpet time, we role played a mission control centre, we made space-themed models and drew what we imagined the crash-landed aliens to look like!

## Year 1

There was an alien invasion at The Hyde School! Year 1 have been very busy getting to the bottom of this invasion.

We wrote a whole class story on what has happened.

1Voyagers worked together to build a fantastic spaceship to help a lost alien travel all the way back home through the galaxy. The children named the alien, Zaazizoo

Meanwhile, 1 Dreamers had a very mischievous alien visitor arrive in their classroom!



There was an alien invasion at the hyde school! Year 1 have been very busy getting to the bottom of this invasion.

# Year 2 - 'Mac-Flies' (Macaws and Fireflies)

The children in Year 2 had a great time celebrating our space themed World Book Day!



The morning consisted of a whole school costume parade as well as visiting the site of a mysterious meteor which had crash landed on our school grounds!



The children recreated the scene using puppets to retell their version of events.



Thank you to our parents/carers who helped provide and make some of the amazing props for their children.



# Rockets



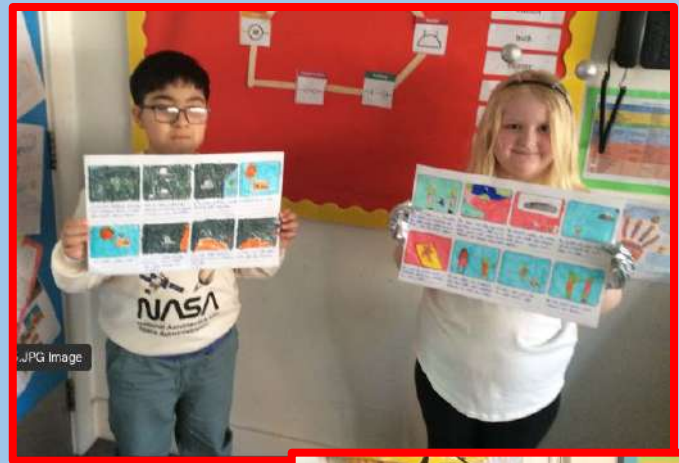
World Book Day In Rockets!  
Children had a great time during WBD. We made rockets, aliens and enjoyed space related stories and songs.

**Year 3**

**World Book Day 2026**



# Year 4



World Book Day in year 4!



# Year 5

## Who Let the Gods Out Theatre Trip

We had great fun watching a Year 5 favourite book being performed on the stage

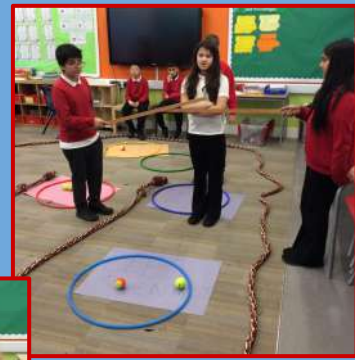
## World Book Day

We enjoyed celebrating our 'Space' themed World Book Day!



# Year 6

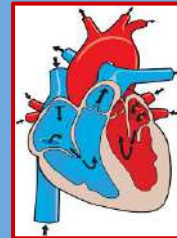
*We learnt about the circulatory system and how and why blood travels around our body.*



We pretended to be valves in the heart, controlling the flow of blood cells.



We collected oxygen balls and delivered them to organs that would stop working without them.




*We role played the journey of a blood cell around the circulatory system.*



# The Hyde School Safeguarding Team

**If you believe a child or adult may be in immediate danger:**

 Call **999** and ask for the appropriate service (Police, Ambulance or Fire Brigade)

**If you are worried about the safety or welfare of a child, you can contact:**

 **Barnet MASH**  
0208 359 4066

 [mash@barnet.gov.uk](mailto:mash@barnet.gov.uk)

 **Brent Family Front Door**  
020 8937 4300

<https://www.brent.gov.uk/services-for-residents/children-and-family-support/keeping-children-safe/contact-our-protection-team/>

**NSPCC Helpline (for advice)**

 0808 800 5000 [help@nspcc.org.uk](mailto:help@nspcc.org.uk)

**Other useful support websites:**

- <https://www.solacewomensaid.org/>
- <https://mensadviceline.org.uk/>

At The Hyde, we have a caring safeguarding team ready to support your child. Our school email inbox is checked every day, so if you ever feel the school can help in any way, please don't hesitate to get in touch:

**[safeguarding@thehydeschool.co.uk](mailto:safeguarding@thehydeschool.co.uk)**

**We're here to listen and support you.**



**Philippa Saving**  
Headteacher /DSL



**Lisa Pratchett**  
Senior Learning  
Mentor



**Nisha Mehta**  
Deputy Head



**Spencer Guy**  
Assistant Head



**Charlotte Lee Foo Pln**  
Assistant Head



**Zareen Oozeerally**  
Assistant Head

**Safeguarding is Everyone's Responsibility**



# The Hyde School

## Term Dates 2025 – 2026



### Autumn Term 2025

**Children return to school on Wednesday 3rd September 2025**

<b>OPEN</b>	First Half	<b>Wednesday 3rd September – Friday 24th October</b>
<b>CLOSED</b>	Half Term	Monday 27th October – Friday 31st October
<b>OPEN</b>	Second Half	<b>Monday 3rd November – Friday 19th December</b>

### Spring Term 2026

<b>OPEN</b>	First Half	<b>Tuesday 6th January – Friday 13th February</b>
<b>CLOSED</b>	Half Term	Monday 16th February – Friday 20th February
<b>OPEN</b>	Second Half	<b>Monday 23rd February – Friday 27th March</b>

### Summer Term 2025

<b>OPEN</b>	First Half	<b>Monday 13th April – Thursday 21st May</b>
<b>CLOSED</b>	May Day	Monday 4th May – school closed for Bank Holiday
<b>CLOSED</b>	Half Term	Monday 25th May – Friday 29th May
<b>OPEN</b>	Second Half	<b>Monday 1st June – Friday 17th July</b>

### STAFF TRAINING DAYS (INSET)/ BANK HOLIDAYS

**Monday 1st September 2025** - Inset Day  
**Tuesday 2nd September 2025** - Inset Day  
**Monday 5th January 2026** - Inset Day  
**Monday 4th May 2026** - Bank Holiday  
**Friday 22nd May 2026** - Academy Closure Day  
**Monday 20th July 2026** – Inset Day



# The Hyde School

## Term Dates 2026 – 2027



### Autumn Term 2026

**Children return to school on Thursday 3rd September 2026**

<b>OPEN</b>	First Half	<b>Thursday 3rd September – Thursday 22nd October</b>
<b>CLOSED</b>	Half Term	Monday 26th October – Friday 30th October
<b>OPEN</b>	Second Half	<b>Monday 2nd November – Friday 18th December</b>

### Spring Term 2027

<b>OPEN</b>	First Half	<b>Wednesday 6th January – Friday 12th February</b>
<b>CLOSED</b>	Half Term	Monday 15th February – Friday 19th February
<b>OPEN</b>	Second Half	<b>Monday 22nd February – Thursday 25th March</b>

### Summer Term 2027

<b>OPEN</b>	First Half	<b>Monday 12th April – Thursday 27th May</b>
<b>CLOSED</b>	May Day	Monday 3rd May – school closed for Bank Holiday
<b>CLOSED</b>	Half Term	Monday 31st May – Friday 4th June
<b>OPEN</b>	Second Half	<b>Monday 7th June – Thursday 22nd July</b>

### STAFF TRAINING DAYS (INSET)/ BANK HOLIDAYS

**Tuesday 1st September 2026** - Inset Day  
**Wednesday 2nd September 2026** - Inset Day  
**Friday 23rd October 2026** - Inset Day  
**Tuesday 5th January 2027** - Inset Day  
**Monday 3rd May 2027** - Bank Holiday  
**Friday 28th May 2027** - Inset Day

## Communication Update

As some of you may be aware, the software we use as a school to communicate with families, changed in September. We were able to make the change without this having too much of an impact on the way we communicate with families.

However, we are aware that some families are not receiving all of our emails or text messages as they should. There are also some families who are receiving emails straight to their junk/spam folders.

In order to try to rectify this, please let us know if you are not receiving any or only some of our communications. We will then be able to look into why this might be happening.

**Please also check your junk/spam folders for any emails we may send.**

If you do receive any emails in your junk/spam folders, please move these emails into your inbox. This will then signify to your email server that the email is not junk/spam & you should then start to receive emails straight to your inbox as normal.

**Thank you for your patience & support**

**If you have any other queries, please let us know**

# Parking Reminder

If you are driving to and from school, please park considerately.

We have ongoing complaints about some parents blocking driveways and being abusive or aggressive to residents when asked to move.

Please be polite to our neighbours and set a good example for our children.

**FREE PARKING** for up to 2 hours is available at [West Hendon Playing Field Car Park](#) (round the corner from Hyde Crescent).

# School Dinners

Please note that children cannot change from packed lunches to school dinners without notice.  
 If your child would like to change to school dinner, please speak to the office at least one week in advance.

THE HYDE	Date: 22 <sup>nd</sup> Feb, 18 <sup>th</sup> Mar, 8 <sup>th</sup> Apr, 27 <sup>th</sup> Apr, 18 <sup>th</sup> May 9 <sup>th</sup> Jun, 28 <sup>th</sup> Jun, 20 <sup>th</sup> Jul	Date: 2 <sup>nd</sup> Mar, 23 <sup>rd</sup> Mar, 13 <sup>th</sup> Apr, 4 <sup>th</sup> May, 25 <sup>th</sup> May 15 <sup>th</sup> Jun, 6 <sup>th</sup> Jul, 27 <sup>th</sup> Jul	Date: 5 <sup>th</sup> Mar, 30 <sup>th</sup> Mar, 20 <sup>th</sup> Apr, 17 <sup>th</sup> May 7 <sup>th</sup> Jun, 22 <sup>nd</sup> Jun, 13 <sup>th</sup> July
	WEEK 1	WEEK 2	WEEK 3
MONDAY	Turkey mince Pasta Bolognese (GL, SU) Veggie Noodle Str Fry (GL, EG, SO) Jacket Potatoes - Cheese (M), Beans or Tuna (F) Sandwiches-Egg (GL, EG, SO), Cheese (GL, M, SO) or Tuna (GL, SO, F) Ice Cream (M) or Fresh Fruit	Loaded Mac 'n' Cheese (GL, M) BBQ Veggie Burrito (GL, SO) Jacket Potatoes - Cheese (M), Beans or Tuna (F) Sandwiches-Egg (GL, EG, SO), Cheese (GL, M, SO) or Tuna (GL, SO, F) Ice Cream (M) or Fresh Fruit	Chicken Hot Dog with Wedges (GL, SO, SE, SU) Vegan Hot Dog with Wedges (GL, SO, SE) Jacket Potatoes - Cheese (M), Beans or Tuna (F) Sandwiches-Egg (GL, EG, SO), Cheese (GL, M, SO) or Tuna (GL, SO, F) Ice Cream (M) or Fresh Fruit
TUESDAY	Mild Chicken Curry with Steamed Rice Vegan Meatballs with Tomato Sauce & Rice (SU) Jacket Potatoes - Cheese (M), Beans or Tuna (F) Sandwiches-Egg (GL, EG, SO), Cheese (GL, M, SO) or Tuna (GL, SO, F) Apple Crumble & Custard (GL, M) or Fresh Fruit	Turkey Lasagne (GL, EG, M) Veggie Cottage Pie (GL, SO) Jacket Potatoes - Cheese (M), Beans or Tuna (F) Sandwiches-Egg (GL, EG, SO), Cheese (GL, M, SO) or Tuna (GL, SO, F) Fruity Pudding (GL) or Fresh Fruit	Lemon & Herb Turkey Jacket Rice (SU) Handmade Margherita Pizza with Garden Salad (GL, M) Jacket Potatoes - Cheese (M), Beans or Tuna (F) Sandwiches-Egg (GL, EG, SO), Cheese (GL, M, SO) or Tuna (GL, SO, F) Fruity Shortbread (GL) or Fresh Fruit
WEDNESDAY	Roast Chicken with Potatoes & Gravy (SU) Squash & Spinach Flat with Potatoes & Gravy (GL, SO) Jacket Potatoes - Cheese (M), Beans or Tuna (F) Sandwiches-Egg (GL, EG, SO), Cheese (GL, M, SO) or Tuna (GL, SO, F) Vegan Fruit Jelly or Fresh Fruit	Chicken Sandwiches with Mash & Gravy (GL, EG, SU) Vegan Sausage with Mash & Gravy (SO, SU) Jacket Potatoes - Cheese (M), Beans or Tuna (F) Sandwiches-Egg (GL, EG, SO), Cheese (GL, M, SO) or Tuna (GL, SO, F) Oat & Banana Biscuit (GL) or Fresh Fruit	Roast Turkey with Potatoes & Gravy (SU) Sweet Potato and Mushroom Loaf with Potatoes & Gravy (GL) Jacket Potatoes - Cheese (M), Beans or Tuna (F) Sandwiches-Egg (GL, EG, SO), Cheese (GL, M, SO) or Tuna (GL, SO, F) Vegan Fruit Jelly or Fresh Fruit
THURSDAY	Chicken Meatballs & Tomato Pasta (GL) Handmade Margherita Pizzas with Vegetable Sticks (GL, M) Jacket Potatoes - Cheese (M), Beans or Tuna (F) Sandwiches-Egg (GL, EG, SO), Cheese (GL, M, SO) or Tuna (GL, SO, F) Marble Cake (GL) or Fresh Fruit	Salmon Fillet with New Potatoes & Pesto Tomato Sauce (F, I) Handmade Margherita Pizzas with Sweetcorn (GL, M) Jacket Potatoes - Cheese (M), Beans or Tuna (F) Sandwiches-Egg (GL, EG, SO), Cheese (GL, M, SO) or Tuna (GL, SO, F) Vegan Fruit Jelly or Fresh Fruit	Chicken & Sweetcorn Wrap (GL, SO, M) Squash & Sweet Potato Dahl with Naan Bread & Rice (GL) Jacket Potatoes - Cheese (M), Beans or Tuna (F) Sandwiches-Egg (GL, EG, SO), Cheese (GL, M, SO) or Tuna (GL, SO, F) Iced Sprinkle Sponge (GL) or Fresh Fruit
FRIDAY	Breaded Fishfingers with Chips (GL, F) Veggie Fingers with Chips (GL) Jacket Potatoes - Cheese (M), Beans or Tuna (F) Sandwiches-Egg (GL, EG, SO), Cheese (GL, M, SO) or Tuna (GL, SO, F) Apple & Raisin Biscuit (GL) or Fresh Fruit	Breaded Fillet of fish with Chips (GL, F) Falafel with Chips (GL) Tuna Pasta (GL) Jacket Potatoes - Cheese (M), Beans or Tuna (F) Sandwiches-Egg (GL, EG, SO), Cheese (GL, M, SO) or Tuna (GL, SO, F) Chocolate Sweets (GL) or Fresh Fruit	Breaded Fishfingers with Chips (GL, F) Loaded Bean & Veggie Chili with Chips (GL, M, SO) Tomato Pasta (GL) Jacket Potatoes - Cheese (M), Beans or Tuna (F) Sandwiches-Egg (GL, EG, SO), Cheese (GL, M, SO) or Tuna (GL, SO, F) Soft Baked Chocolate Cookies (GL) or Fresh Fruit

**VEGETABLES, SALAD, BREAD, AVAILABLE DAILY**      **ALL MEAT IS HALAL CERTIFIED**

ALLERGY INFO: GLUTEN - G, NUTS - N, CRUSTACEANS - C, EGGS - E, SOY - S, FISH - F, LAMB - L, PORK - P, MILK - M, PEANUTS - PE, PRESERV - PR, FRUIT - FR, YEASTS - Y, VEGETARIAN - V, SOYAPRO - SA, SOYAPRO - SO

The Pastry are committed to improving the standards of children's meals across every one of our Schools, and Pastry, ethically sourced ingredients are used every day across our kitchens.



# Breakfast & After School Clubs

Our Breakfast and After School Childcare Clubs are available for children from Reception (once attending full time) to Year 6.

If you would like to register please go to:

[www.ultimateprimarysports.com](http://www.ultimateprimarysports.com)



# Food Bank Information

For those struggling with food, the Colindale Foodbank will be open on Tuesdays and Thursdays 12pm to 2.30pm. Trinity Church, Northwest Centre, Avion Crescent, Grahame Park Way, NW9 5QY

Bread N Butter is cooking and freezing healthy meals, which can be delivered locally to those in need. Please call 0208 357 0923 or email [info@sct.london](mailto:info@sct.london). Open between 10am and 4pm weekdays

NW7 hub (Mill Hill Library) are providing a food bank and food bank delivery service 10am to 1pm Mon - Thurs and Saturday Mill Hill Library Building, Hartley Avenue, Mill Hill, London, NW7 2HX - 0208 906 3125

## A fun filled morning with award winning author Steven Butler and The Nothing to See Here Hotel Series



Join award winning author Steven Butler talking about his 'The Nothing To See Here Hotel series'

Expect laughter and surprises throughout the event!

His The Nothing To See Here Hotel series won the 2018 Sainsbury's Fiction Prize.

'Hilariously funny and inventive, and I love the extraordinary creatures and the one thirty-sixth troll protagonist...'  
Cressida Cowell

Book tickets at:  
<https://barnet-libraries.played.co/>  
or via the QR code below.

Colindale Library  
Saturday 4 April 11am-1pm including a Q&A  
and book signing session.



Open to children aged 8-12yrs only.

@barnetlibraries  
#LearningLeisureLife  
[www.barnet.gov.uk/libraries](http://www.barnet.gov.uk/libraries)



Caring for people, our places and the planet

## Who Let the Words Out?



Calling on all budding young poets for the Barnet Libraries Festival!

Join renowned multi award winning poet, author and performer Joshua Seigal for an energetic and interactive performance, as he shares poems from his award-winning selection of publications.

Expect fun, randomness and cats.

Arrive early to sign up for the open mic session and read your own poems!

Book tickets at:  
<https://barnet-libraries.played.co/>  
or via the QR code below.

Finchley Church End Library  
Saturday 18 April 11am-1pm including a Q&A  
and book signing session.

Open to children aged 7-11yrs only.



@barnetlibraries  
#LearningLeisureLife  
[www.barnet.gov.uk/libraries](http://www.barnet.gov.uk/libraries)



Caring for people, our places and the planet