



The Hyde School Newsletter

Summer Term: 22nd May 2026



Dear Families,

As we begin the half-term holiday, I would like to wish all of our pupils, families and staff a restful and enjoyable break. I hope everyone has the opportunity to relax, recharge and spend quality time together.

I would also like to extend warm wishes to all of our families who will be celebrating Eid al-Adha during the holiday. May this special occasion bring peace, happiness and joy to you and your loved ones. Eid Mubarak to all who are celebrating.

This week, parents and families in EYFS joined us for the children's *Ugly Bug Ball*. Thank you to everyone who attended and supported the event. The children looked fantastic and the costumes were absolutely amazing. It was wonderful to see so much creativity and enthusiasm on display. We were also very proud of the children in KS2 who represented the school at the Barnet Athletics competition this week. They demonstrated excellent teamwork, determination and sportsmanship throughout the event.

We are looking forward to an exciting and very busy Summer 2 term ahead, with lots of wonderful events planned across the school. These include our school discos, Cultural Fortnight, the Year 6 production of *Matilda*, and our very first Nursery to Year 5 music concert, celebrating the theme of Motown. We cannot wait to share these special experiences with our children and families.

Finally, we had a lovely last day with Lisa yesterday! On behalf of the whole school community, I would like to thank her for all of her hard work and dedication, and we wish her every success and happiness in her future endeavours.

Ms Saving

Headteacher

We would like to say a huge
thank you & farewell to our
lovely Lisa!

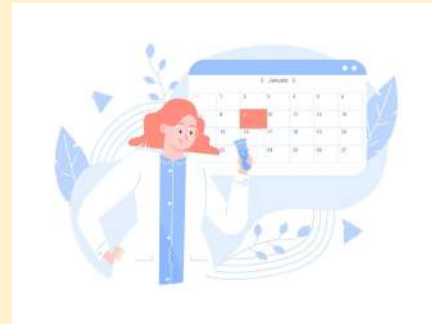


Reminder

Your child needs to be in school as much as possible to support their learning.

Where possible, please ensure that routine appointments (doctors, dentist, opticians etc.) are booked outside of the school day.

Thank you for your support.



Attendance Award

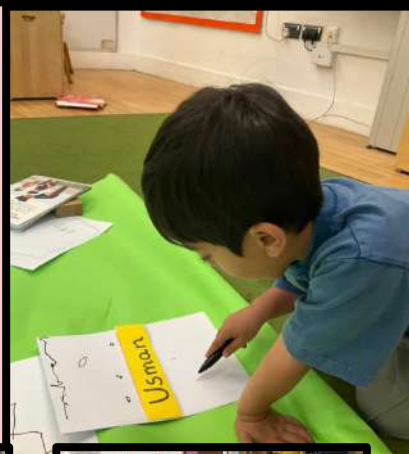
Our attendance has been great for the last few weeks, so EVERY class will have a chance to win either BAS or BEA for the week!

All class names are in a box and ONE will be picked out each week!



Nursery

This week in nursery, the children have been developing their fine motor skills by drawing self-portraits. They have also been getting "Reception ready" by practising their name writing skills!



Reception



Reception made some beautiful snail models from clay using tools and slip (using a special ceramics joining technique) to sell at our Enterprise Event after half term. They had so much fun at the Ugly Bug Ball too singing 'There's a Worm at the Bottom of My Garden' using Makaton sign language. Have a lovely half term everyone!

Year 1

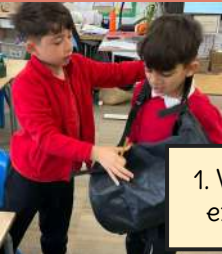
This week, the children have been learning all about the human life cycle. We explored how people grow and change from babies to adults, and discussed the different stages of life. The children enjoyed talking about the things humans can do at different ages, such as crawling, walking, talking, learning, working, and caring for others.



In Maths this week, the children have been learning to count in 2s, 5s and 10s. We have practised recognising number patterns and using repeated addition.

Year 2 - 'Mac-Flies' (Macaws and Fireflies)

We started our DT project after learning that our local area is covered in litter so decided to design and make our own litter picking bags.



1. We evaluated existing bags.



3. It was then time to design our products.



5. Year 2s and their purpose made recycled bags were ready for action!



4. We started making our products with a hem along the top, followed by bottom and side seams.



2. During our skills workshop, we practised how to thread a needle, cast off and produce a running stitch.



6. We completed the project by evaluating our bags.



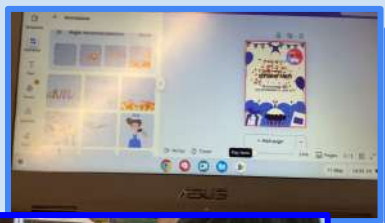
Rockets



Rockets class have been working on number bonds to 5, 10 and 20, alongside developing mark making and writing skills, utilizing phonics.

Year 3

Computing- Creating Media Desktop publishing



Kevin's Fantastic Birthday

The party is at 2pm,
it's on the farm

It's Kevin's 6th birthday!!!



Party time!

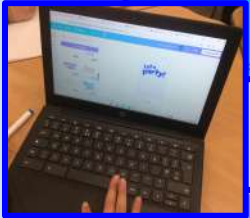
The party is for Kevin

It's Kevin's 6th birthday

It is on the farm

The party is at 2pm

reply to Kevin's dad



Life party!

It's Kevin's 6th birthday

Kevin's party is at 2pm make sure to be on time!

It's on the farm on the 12th of the month!

reply to Kevin's Dad !!

party time

HAPPY BIRTHDAY

It is Kevin's 6th birthday

The party is for Kevin

The party is at 2pm

It is on the farm

reply to Kevin's dad



Year 4



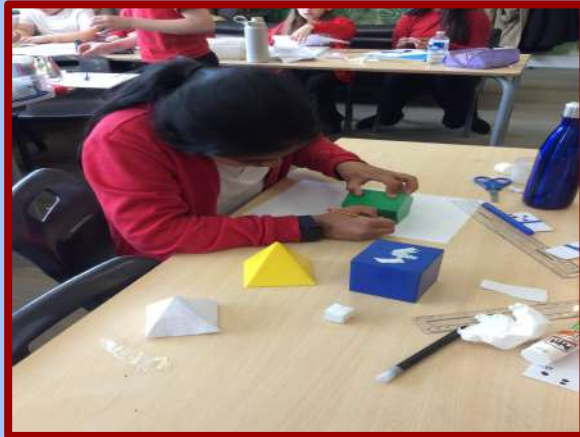
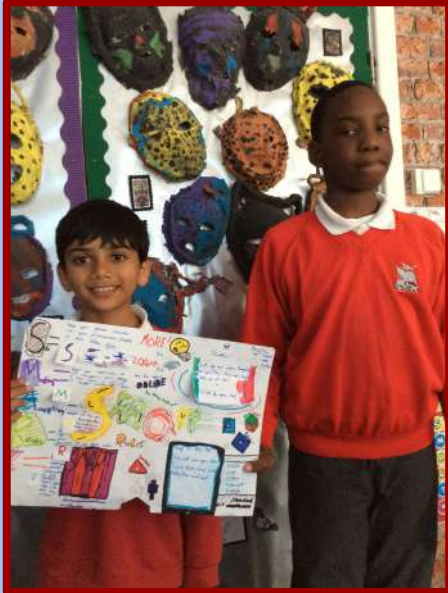
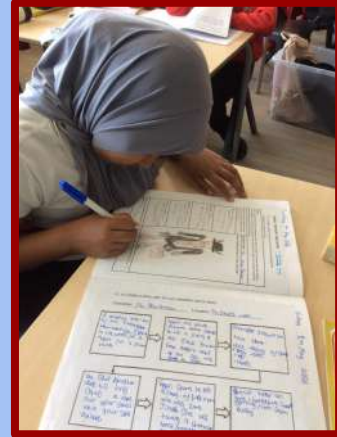
Year 4 have been introduced to money in Maths. They have been learning to recognise and show amounts in different ways using coins and notes.



Year 5

Here is some of the learning we have been doing this week

In PSHE we have completed our SMART posters about online safety.



In maths we were looking at 3D shapes and in English we have been busy writing our spooky horror stories




Year 6

To celebrate the end of SATs, we went to Flip Out and had a fantastic time!



The Hyde School Safeguarding Team

If you believe a child or adult may be in immediate danger:

 Call **999** and ask for the appropriate service (Police, Ambulance or Fire Brigade)

If you are worried about the safety or welfare of a child, you can contact:

 **Barnet MASH**
0208 359 4066
 mash@barnet.gov.uk

 **Brent Family Front Door**
020 8937 4300

<https://www.brent.gov.uk/services-for-residents/children-and-family-support/keeping-children-safe/contact-our-protection-team/>

NSPCC Helpline (for advice)

 0808 800 5000 help@nspcc.org.uk

Other useful support websites:

- <https://www.solacewomensaid.org/>
- <https://mensadviceline.org.uk/>

At The Hyde, we have a caring safeguarding team ready to support your child. Our school email inbox is checked every day, so if you ever feel the school can help in any way, please don't hesitate to get in touch:

safeguarding@thehydeschool.co.uk

We're here to listen and support you.



Philippa Saving
Headteacher /DSL



Lisa Pratchett
Senior Learning
Mentor



Nisha Mehta
Deputy Head



Spencer Guy
Assistant Head



Charlotte Lee Foo Pln
Assistant Head



Zareen Oozeerally
Assistant Head

Safeguarding is Everyone's Responsibility



The Hyde School

Term Dates 2025 – 2026



Autumn Term 2025

Children return to school on Wednesday 3rd September 2025

OPEN	First Half	Wednesday 3rd September – Friday 24th October
CLOSED	Half Term	Monday 27th October – Friday 31st October
OPEN	Second Half	Monday 3rd November – Friday 19th December

Spring Term 2026

OPEN	First Half	Tuesday 6th January – Friday 13th February
CLOSED	Half Term	Monday 16th February – Friday 20th February
OPEN	Second Half	Monday 23rd February – Friday 27th March

Summer Term 2025

OPEN	First Half	Monday 13th April – Thursday 21st May
CLOSED	May Day	Monday 4th May – school closed for Bank Holiday
CLOSED	Half Term	Monday 25th May – Friday 29th May
OPEN	Second Half	Monday 1st June – Friday 17th July

STAFF TRAINING DAYS (INSET)/ BANK HOLIDAYS

Monday 1st September 2025 - Inset Day
Tuesday 2nd September 2025 - Inset Day
Monday 5th January 2026 - Inset Day
Monday 4th May 2026 - Bank Holiday
Friday 22nd May 2026 - Academy Closure Day
Monday 20th July 2026 – Inset Day



The Hyde School

Term Dates 2026 – 2027



Autumn Term 2026

Children return to school on Thursday 3rd September 2026

OPEN	First Half	Thursday 3rd September – Thursday 22nd October
CLOSED	Half Term	Monday 26th October – Friday 30th October
OPEN	Second Half	Monday 2nd November – Friday 18th December

Spring Term 2027

OPEN	First Half	Wednesday 6th January – Friday 12th February
CLOSED	Half Term	Monday 15th February – Friday 19th February
OPEN	Second Half	Monday 22nd February – Thursday 25th March

Summer Term 2027

OPEN	First Half	Monday 12th April – Thursday 27th May
CLOSED	May Day	Monday 3rd May – school closed for Bank Holiday
CLOSED	Half Term	Monday 31st May – Friday 4th June
OPEN	Second Half	Monday 7th June – Thursday 22nd July

STAFF TRAINING DAYS (INSET)/ BANK HOLIDAYS

Tuesday 1st September 2026 - Inset Day
Wednesday 2nd September 2026 - Inset Day
Friday 23rd October 2026 - Inset Day
Tuesday 5th January 2027 - Inset Day
Monday 3rd May 2027 - Bank Holiday
Friday 28th May 2027 - Inset Day

Parking Reminder

If you are driving to and from school, please park considerately.

We have ongoing complaints about some parents blocking driveways and being abusive or aggressive to residents when asked to move.

Please be polite to our neighbours and set a good example for our children.

FREE PARKING for up to 2 hours is available at [West Hendon Playing Field Car Park](#) (round the corner from Hyde Crescent).

School Dinners

Please note that children cannot change from packed lunches to school dinners without notice.
 If your child would like to change to school dinner, please speak to the office at least one week in advance.

THE HYDE	Date: 22 nd Feb, 18 th Mar, 8 th Apr, 27 th Apr, 18 th May 9 th Jun, 28 th Jun, 20 th Jul	Date: 2 nd Mar, 23 rd Mar, 13 th Apr, 4 th May, 25 th May 15 th Jun, 6 th Jul, 27 th Jul	Date: 5 th Mar, 30 th Mar, 20 th Apr, 17 th May 7 th Jun, 22 nd Jun, 13 th July
	WEEK 1	WEEK 2	WEEK 3
MONDAY	Turkey mince Pasta Bolognese (GL, SU) Veggie Noodle Str Fry (GL, EG, SO) Jacket Potatoes - Cheese (M), Beans or Tuna (F) Sandwiches-Egg (GL, EG, SO), Cheese (GL, M, SO) or Tuna (GL, SO, F) Ice Cream (M) or Fresh Fruit	Loaded Mac 'n' Cheese (GL, M) BBQ Veggie Burrito (GL, SO) Jacket Potatoes - Cheese (M), Beans or Tuna (F) Sandwiches-Egg (GL, EG, SO), Cheese (GL, M, SO) or Tuna (GL, SO, F) Ice Cream (M) or Fresh Fruit	Chicken Hot Dog with Wedges (GL, SO, SE, SU) Vegan Hot Dog with Wedges (GL, SO, SE) Jacket Potatoes - Cheese (M), Beans or Tuna (F) Sandwiches-Egg (GL, EG, SO), Cheese (GL, M, SO) or Tuna (GL, SO, F) Ice Cream (M) or Fresh Fruit
TUESDAY	Mild Chicken Curry with Steamed Rice Vegan Meatballs with Tomato Sauce & Rice (SU) Jacket Potatoes - Cheese (M), Beans or Tuna (F) Sandwiches-Egg (GL, EG, SO), Cheese (GL, M, SO) or Tuna (GL, SO, F) Apple Crumble & Custard (GL, M) or Fresh Fruit	Turkey Lasagne (GL, EG, M) Veggie Cottage Pie (GL, SO) Jacket Potatoes - Cheese (M), Beans or Tuna (F) Sandwiches-Egg (GL, EG, SO), Cheese (GL, M, SO) or Tuna (GL, SO, F) Fruity Pudding (GL) or Fresh Fruit	Lemon & Herb Turkey Jacket Rice (SU) Handmade Margherita Pizza with Garden Salad (GL, M) Jacket Potatoes - Cheese (M), Beans or Tuna (F) Sandwiches-Egg (GL, EG, SO), Cheese (GL, M, SO) or Tuna (GL, SO, F) Fruity Shortbread (GL) or Fresh Fruit
WEDNESDAY	Roast Chicken with Potatoes & Gravy (SU) Squash & Spinach Flat with Potatoes & Gravy (GL, SO) Jacket Potatoes - Cheese (M), Beans or Tuna (F) Sandwiches-Egg (GL, EG, SO), Cheese (GL, M, SO) or Tuna (GL, SO, F) Vegan Fruit Jelly or Fresh Fruit	Chicken Sandwiches with Mash & Gravy (GL, EG, SU) Vegan Sausage with Mash & Gravy (SO, SU) Jacket Potatoes - Cheese (M), Beans or Tuna (F) Sandwiches-Egg (GL, EG, SO), Cheese (GL, M, SO) or Tuna (GL, SO, F) Hot & Banana Biscuit (GL) or Fresh Fruit	Roast Turkey with Potatoes & Gravy (SU) Sweet Potato and Mushroom Loaf with Potatoes & Gravy (GL) Jacket Potatoes - Cheese (M), Beans or Tuna (F) Sandwiches-Egg (GL, EG, SO), Cheese (GL, M, SO) or Tuna (GL, SO, F) Vegan Fruit Jelly or Fresh Fruit
THURSDAY	Chicken Meatballs & Tomato Pasta (GL) Handmade Margherita Pizzas with Vegetable Sticks (GL, M) Jacket Potatoes - Cheese (M), Beans or Tuna (F) Sandwiches-Egg (GL, EG, SO), Cheese (GL, M, SO) or Tuna (GL, SO, F) Marble Cake (GL) or Fresh Fruit	Salmon Fillet with New Potatoes & Pesto Tomato Sauce (F, I) Handmade Margherita Pizzas with Sweetcorn (GL, M) Jacket Potatoes - Cheese (M), Beans or Tuna (F) Sandwiches-Egg (GL, EG, SO), Cheese (GL, M, SO) or Tuna (GL, SO, F) Vegan Fruit Jelly or Fresh Fruit	Chicken & Sweetcorn Wrap (GL, SO, M) Squash & Sweet Potato Dahl with Naan Bread & Rice (GL) Jacket Potatoes - Cheese (M), Beans or Tuna (F) Sandwiches-Egg (GL, EG, SO), Cheese (GL, M, SO) or Tuna (GL, SO, F) Iced Sprinkle Sponge (GL) or Fresh Fruit
FRIDAY	Breaded Fishfingers with Chips (GL, F) Veggie Fingers with Chips (GL) Jacket Potatoes - Cheese (M), Beans or Tuna (F) Sandwiches-Egg (GL, EG, SO), Cheese (GL, M, SO) or Tuna (GL, SO, F) Apple & Raisin Biscuit (GL) or Fresh Fruit	Breaded Fillet of fish with Chips (GL, F) Falafel with Chips (GL) Tuna Pasta (GL) Jacket Potatoes - Cheese (M), Beans or Tuna (F) Sandwiches-Egg (GL, EG, SO), Cheese (GL, M, SO) or Tuna (GL, SO, F) Chocolate Sweets (GL) or Fresh Fruit	Breaded Fishfingers with Chips (GL, F) Loaded Bean & Veggie Chili with Chips (GL, M, SO) Tomato Pasta (GL) Jacket Potatoes - Cheese (M), Beans or Tuna (F) Sandwiches-Egg (GL, EG, SO), Cheese (GL, M, SO) or Tuna (GL, SO, F) Soft Baked Chocolate Cookies (GL) or Fresh Fruit

VEGETABLES, SALAD, BREAD, AVAILABLE DAILY **ALL MEAT IS HALAL CERTIFIED**

ALLERGY INFO: GLUTEN - G, NUTS - N, CRUSTACEANS - C, EGGS - E, SOY - S, FISH - F, LAMB - L, PORK - P, MILK - M, PEANUTS - PE, POTATOES - PO, RICE - R, SEEDS - SE, SPICES - SP, VEGETARIAN - V, WHEAT - W

The Pastry are committed to improving the standards of children's meals across every one of our Schools, and Pastry, ethically sourced ingredients are used every day across our kitchens.



Breakfast & After School Clubs

Our Breakfast and After School Childcare Clubs are available for children from Reception (once attending full time) to Year 6.

If you would like to register please go to:

www.ultimateprimarysports.com



Food Bank Information

For those struggling with food, the Colindale Foodbank will be open on Tuesdays and Thursdays 12pm to 2.30pm. Trinity Church, Northwest Centre, Avion Crescent, Grahame Park Way, NW9 5QY

Bread N Butter is cooking and freezing healthy meals, which can be delivered locally to those in need. Please call 0208 357 0923 or email info@sct.london. Open between 10am and 4pm weekdays

NW7 hub (Mill Hill Library) are providing a food bank and food bank delivery service 10am to 1pm Mon - Thurs and Saturday Mill Hill Library Building, Hartley Avenue, Mill Hill, London, NW7 2HX - 0208 906 3125

AGED 6-14? ADVENTURE IS CALLING...

Come and join us at **2nd Edgware Scouts!** We're all about fun, friendship and exploring the world. Think archery, cooking, filmmaking and water sports. Take a leap forward and try something new! Visit us for a free taster session...



Beavers & Cubs (ages 6 - 10½)
Wednesdays 5.45 - 7.15pm

Scouts (ages 10½ - 14)
Tuesdays 7.00 - 9.00pm



Just £35 per term
Three terms per year



Find out more
& sign up:
www.edgware-scouts.org.uk



We meet a 4 minute walk from Edgware Station