



The Hyde School Newsletter

Spring Term: 27th March 2026



Dear Families,

I am pleased to share that our school Instagram page has now been launched. You can follow us at *The_Hyde_School* to see updates, celebrations, and highlights from school life. Our social media lead is Mokhi, who will be helping to share all the wonderful things happening in our school community.

If you have not yet had the opportunity to do so and would like to share your feedback on how well we are doing, we warmly encourage you to complete the survey. Please scan the QR code or click this [link](#) provided, and your views are incredibly important to us and help shape our ongoing improvements.

Over the Easter holidays, a number of site improvements will be taking place across the school. This includes specialist cleaning of the children's toilets in the downstairs corridors, which will also be repainted. The floors in Rocket's classroom will be replaced, and work in the hall is now fully underway and on track to be completed by May.

Finally, I would like to wish all of our families a very happy and restful Easter break, and a Happy Easter to those families who celebrate this special time, with best wishes for a joyful and peaceful time spent with family and friends.

Ms Saving
Headteacher

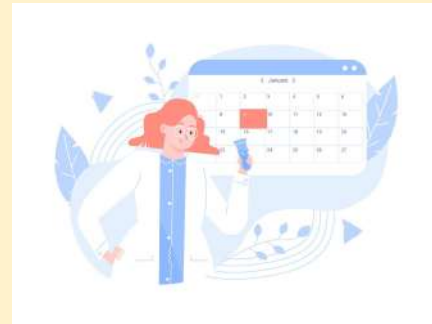


Reminder

Your child needs to be in school as much as possible to support their learning.

Where possible, please ensure that routine appointments (doctors, dentist, opticians etc.) are booked outside of the school day.

Thank you for your support.



Attendance Award

Because our attendance has been great for the last few weeks EVERY class will have a chance to win either BAS or BEA for the week! All class names are in a box and ONE will be picked out each week!



Nursery

Nursery had been busy learning about Jack and the Beanstalk! The children have been planting beans and observing how they grow over time!



The children have also been busy celebrating Science Week! They've been exploring, experimenting, and discovering how things work!



Reception



It's been a busy fortnight again in Reception. Last week we carried out some experiments for British Science Week, planted seeds then made (and ate) vegetable kebabs as part of the green curriculum. This week we have been exploring some different art techniques for our 'Under the Sea' display.

Year 1

This week we have been learning about seasonal changes. We went on a spring walk around our school and found lots of signs of spring!



This week we have been measuring length and height.



Year 2 - 'Mac-Flies' (Macaws and Fireflies)

The Year 2 Sponsored Skip-a-thon!
(See Tapestry for more photos and videos!)



The children have been working so hard in PE lessons and at break times to improve their skipping skills.



Thank you to our parents/carers for coming to cheer the children on. Thank you for your generosity in sponsoring the children.



The Skip-a-thon included individual skipping, skipping races, long skipping, hoop skipping and jumping.



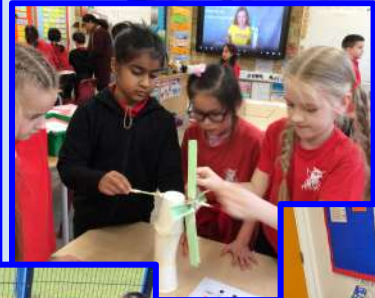
Rockets



Science Week In Rockets!
As a part of Science week children in Rockets planted broad beans in plant pots and helped to plant lentil seeds in our garden. We learned parts of plants and trees as well as plant life cycle and how trees change through seasons.

Year 3

Science week 2026



Year 4



Science week in
Year 4!



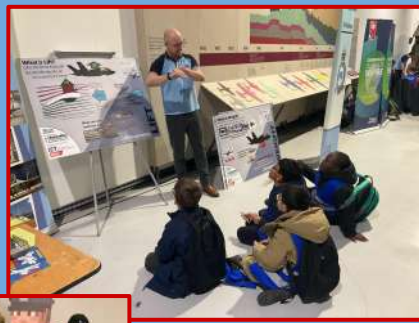
Year 5

RAF Museum Trip

The museum hosted a Science Day as part of Science Week. There were lots of fun experiments and activities to try



Year 6




We took part in a STEM challenge day at The RAF Museum.



The Hyde School Safeguarding Team

If you believe a child or adult may be in immediate danger:

 Call **999** and ask for the appropriate service (Police, Ambulance or Fire Brigade)

If you are worried about the safety or welfare of a child, you can contact:

 **Barnet MASH**
0208 359 4066

 mash@barnet.gov.uk

 **Brent Family Front Door**
020 8937 4300

<https://www.brent.gov.uk/services-for-residents/children-and-family-support/keeping-children-safe/contact-our-protection-team/>

NSPCC Helpline (for advice)

 0808 800 5000 help@nspcc.org.uk

Other useful support websites:

- <https://www.solacewomensaid.org/>
- <https://mensadviceline.org.uk/>

At The Hyde, we have a caring safeguarding team ready to support your child. Our school email inbox is checked every day, so if you ever feel the school can help in any way, please don't hesitate to get in touch:

safeguarding@thehydeschool.co.uk

We're here to listen and support you.



Philippa Saving
Headteacher /DSL



Lisa Pratchett
Senior Learning
Mentor



Nisha Mehta
Deputy Head



Spencer Guy
Assistant Head



Charlotte Lee Foo Pln
Assistant Head



Zareen Oozeerally
Assistant Head

Safeguarding is Everyone's Responsibility



The Hyde School

Term Dates 2025 – 2026



Autumn Term 2025

Children return to school on Wednesday 3rd September 2025

| | | |
|---------------|-------------|--|
| OPEN | First Half | Wednesday 3rd September – Friday 24th October |
| CLOSED | Half Term | Monday 27th October – Friday 31st October |
| OPEN | Second Half | Monday 3rd November – Friday 19th December |

Spring Term 2026

| | | |
|---------------|-------------|---|
| OPEN | First Half | Tuesday 6th January – Friday 13th February |
| CLOSED | Half Term | Monday 16th February – Friday 20th February |
| OPEN | Second Half | Monday 23rd February – Friday 27th March |

Summer Term 2025

| | | |
|---------------|-------------|---|
| OPEN | First Half | Monday 13th April – Thursday 21st May |
| CLOSED | May Day | Monday 4th May – school closed for Bank Holiday |
| CLOSED | Half Term | Monday 25th May – Friday 29th May |
| OPEN | Second Half | Monday 1st June – Friday 17th July |

STAFF TRAINING DAYS (INSET)/ BANK HOLIDAYS

Monday 1st September 2025 - Inset Day
Tuesday 2nd September 2025 - Inset Day
Monday 5th January 2026 - Inset Day
Monday 4th May 2026 - Bank Holiday
Friday 22nd May 2026 - Academy Closure Day
Monday 20th July 2026 – Inset Day



The Hyde School

Term Dates 2026 – 2027



Autumn Term 2026

Children return to school on Thursday 3rd September 2026

| | | |
|---------------|-------------|---|
| OPEN | First Half | Thursday 3rd September – Thursday 22nd October |
| CLOSED | Half Term | Monday 26th October – Friday 30th October |
| OPEN | Second Half | Monday 2nd November – Friday 18th December |

Spring Term 2027

| | | |
|---------------|-------------|---|
| OPEN | First Half | Wednesday 6th January – Friday 12th February |
| CLOSED | Half Term | Monday 15th February – Friday 19th February |
| OPEN | Second Half | Monday 22nd February – Thursday 25th March |

Summer Term 2027

| | | |
|---------------|-------------|---|
| OPEN | First Half | Monday 12th April – Thursday 27th May |
| CLOSED | May Day | Monday 3rd May – school closed for Bank Holiday |
| CLOSED | Half Term | Monday 31st May – Friday 4th June |
| OPEN | Second Half | Monday 7th June – Thursday 22nd July |

STAFF TRAINING DAYS (INSET)/ BANK HOLIDAYS

Tuesday 1st September 2026 - Inset Day
Wednesday 2nd September 2026 - Inset Day
Friday 23rd October 2026 - Inset Day
Tuesday 5th January 2027 - Inset Day
Monday 3rd May 2027 - Bank Holiday
Friday 28th May 2027 - Inset Day

Parking Reminder

If you are driving to and from school, please park considerately.

We have ongoing complaints about some parents blocking driveways and being abusive or aggressive to residents when asked to move.

Please be polite to our neighbours and set a good example for our children.

FREE PARKING for up to 2 hours is available at [West Hendon Playing Field Car Park](#) (round the corner from Hyde Crescent).

School Dinners

Please note that children cannot change from packed lunches to school dinners without notice. If your child would like to change to school dinner, please speak to the office at least one week in advance.

| THE HYDE | Date: 22 nd Feb, 18 th Mar, 8 th Apr, 27 th Apr, 18 th May 9 th Jun, 28 th Jun, 20 th Jul | Date: 2 nd Mar, 23 rd Mar, 13 th Apr, 4 th May, 25 th May 15 th Jun, 6 th Jul, 27 th Jul | Date: 5 th Mar, 30 th Mar, 20 th Apr, 17 th May 7 th Jun, 22 nd Jun, 13 th July |
|-----------|---|--|--|
| | WEEK 1 | WEEK 2 | WEEK 3 |
| MONDAY | Turkey mince Pasta Bolognese (GL, SU) Veggie Noodle Str Fry (GL, EG, SO) Jacket Potatoes - Cheese (M), Beans or Tuna (F) Sandwiches-Egg (GL, EG, SO), Cheese (GL, M, SO) or Tuna (GL, SO, F) Ice Cream (M) or Fresh Fruit | Loaded Mac 'n' Cheese (GL, M) BBQ Veggie Burger (GL, SU) Jacket Potatoes - Cheese (M), Beans or Tuna (F) Sandwiches-Egg (GL, EG, SO), Cheese (GL, M, SO) or Tuna (GL, SO, F) Ice Cream (M) or Fresh Fruit | Chicken Hot Dog with Wedges (GL, SO, SE, SU) Vegan Hot Dog with Wedges (GL, SO, SE) Jacket Potatoes - Cheese (M), Beans or Tuna (F) Sandwiches-Egg (GL, EG, SO), Cheese (GL, M, SO) or Tuna (GL, SO, F) Ice Cream (M) or Fresh Fruit |
| TUESDAY | Mild Chicken Curry with Steamed Rice Vegan Meatballs with Tomato Sauce & Rice (SU) Jacket Potatoes - Cheese (M), Beans or Tuna (F) Sandwiches-Egg (GL, EG, SO), Cheese (GL, M, SO) or Tuna (GL, SO, F) Apple Crumble & Custard (GL, M) or Fresh Fruit | Turkey Lasagne (GL, EG, M) Veggie Cottage Pie (GL, SO) Jacket Potatoes - Cheese (M), Beans or Tuna (F) Sandwiches-Egg (GL, EG, SO), Cheese (GL, M, SO) or Tuna (GL, SO, F) Fruity Pudding (GL) or Fresh Fruit | Lemon & Herb Turkey Jacket Rice (SU) Handmade Margherita Pizza with Garden Salad (GL, M) Jacket Potatoes - Cheese (M), Beans or Tuna (F) Sandwiches-Egg (GL, EG, SO), Cheese (GL, M, SO) or Tuna (GL, SO, F) Fruity Shortbread (GL) or Fresh Fruit |
| WEDNESDAY | Roast Chicken with Potatoes & Gravy (SU) Squash & Spinach Flat with Potatoes & Gravy (GL, SU) Jacket Potatoes - Cheese (M), Beans or Tuna (F) Sandwiches-Egg (GL, EG, SO), Cheese (GL, M, SO) or Tuna (GL, SO, F) Vegan Fruit Jelly or Fresh Fruit | Chicken Sandwiches with Mash & Gravy (GL, SU) Veggie Sausage with Mash & Gravy (GL, SU) Jacket Potatoes - Cheese (M), Beans or Tuna (F) Sandwiches-Egg (GL, EG, SO), Cheese (GL, M, SO) or Tuna (GL, SO, F) Oat & Banana Biscuit (GL) or Fresh Fruit | Roast Turkey with Potatoes & Gravy (SU) Sweet Potato and Mushroom Loaf with Potatoes & Gravy (GL) Jacket Potatoes - Cheese (M), Beans or Tuna (F) Sandwiches-Egg (GL, EG, SO), Cheese (GL, M, SO) or Tuna (GL, SO, F) Vegan Fruit Jelly or Fresh Fruit |
| THURSDAY | Chicken Meatballs & Tomato Pasta (GL) Handmade Margherita Pizzas with Vegetable Sticks (GL, M) Jacket Potatoes - Cheese (M), Beans or Tuna (F) Sandwiches-Egg (GL, EG, SO), Cheese (GL, M, SO) or Tuna (GL, SO, F) Marble Cake (GL) or Fresh Fruit | Salmon Fillet with New Potatoes & Pesto Tomato Sauce (F, I) Handmade Margherita Pizzas with Sweetcorn (GL, M) Jacket Potatoes - Cheese (M), Beans or Tuna (F) Sandwiches-Egg (GL, EG, SO), Cheese (GL, M, SO) or Tuna (GL, SO, F) Vegan Fruit Jelly or Fresh Fruit | Chicken & Sweetcorn Wrap (GL, SO, M) Squash & Sweet Potato Dahl with Naan Bread & Rice (GL) Jacket Potatoes - Cheese (M), Beans or Tuna (F) Sandwiches-Egg (GL, EG, SO), Cheese (GL, M, SO) or Tuna (GL, SO, F) Iced Sprinkle Sponge (GL) or Fresh Fruit |
| FRIDAY | Breaded Fishfingers with Chips (GL, F) Veggie Fingers with Chips (GL) Jacket Potatoes - Cheese (M), Beans or Tuna (F) Sandwiches-Egg (GL, EG, SO), Cheese (GL, M, SO) or Tuna (GL, SO, F) Apple & Raisin Biscuit (GL) or Fresh Fruit | Breaded Fillet of fish with Chips (GL, F) Falafel with Chips (GL) Tuna Pasta (GL) Jacket Potatoes - Cheese (M), Beans or Tuna (F) Sandwiches-Egg (GL, EG, SO), Cheese (GL, M, SO) or Tuna (GL, SO, F) Chocolate Scones (GL) or Fresh Fruit | Breaded Fishfingers with Chips (GL, F) Loaded Bean & Veggie Chili with Chips (GL, M, SO) Tomato Pasta (GL) Jacket Potatoes - Cheese (M), Beans or Tuna (F) Sandwiches-Egg (GL, EG, SO), Cheese (GL, M, SO) or Tuna (GL, SO, F) Soft Baked Chocolate Cookies (GL) or Fresh Fruit |

VEGETABLES, SALAD, BREAD, AVAILABLE DAILY **ALL MEAT IS HALAL CERTIFIED**

ALLERGY INFO: GLUTEN - G, NUTS - N, CRUSTACEANS - C, EGGS - E, SOY - S, FISH - F, LAMB - L, PORK - P, MILK - M, PEANUTS - PE, PRESERV - PR, FRUIT - FR, YEASTS - Y, VEGETARIAN - V, SOYAP - SA, SOYAPRO - SP

The Pastry are committed to improving the standards of children's meals across every one of our Schools, and Pastry, ethically sourced ingredients are used every day across our kitchens.



Breakfast & After School Clubs

Our Breakfast and After School Childcare Clubs are available for children from Reception (once attending full time) to Year 6.

If you would like to register please go to:

www.ultimateprimarysports.com



Food Bank Information

For those struggling with food, the Colindale Foodbank will be open on Tuesdays and Thursdays 12pm to 2.30pm. Trinity Church, Northwest Centre, Avion Crescent, Grahame Park Way, NW9 5QY

Bread N Butter is cooking and freezing healthy meals, which can be delivered locally to those in need. Please call 0208 357 0923 or email info@sct.london. Open between 10am and 4pm weekdays

NW7 hub (Mill Hill Library) are providing a food bank and food bank delivery service 10am to 1pm Mon - Thurs and Saturday Mill Hill Library Building, Hartley Avenue, Mill Hill, London, NW7 2HX - 0208 906 3125

A fun filled morning with award winning author Steven Butler and The Nothing to See Here Hotel Series



Join award winning author Steven Butler talking about his 'The Nothing To See Here Hotel series'

Expect laughter and surprises throughout the event!

His The Nothing To See Here Hotel series won the 2018 Sainsbury's Fiction Prize.

'Hilariously funny and inventive, and I love the extraordinary creatures and the one thirty-sixth troll protagonist...'
Cressida Cowell

Book tickets at:
<https://barnet-libraries.played.co/>
or via the QR code below.

Colindale Library
Saturday 4 April 11am-1pm including a Q&A
and book signing session.



Open to children aged 8-12yrs only.

@barnetlibraries
#LearningLeisureLife
www.barnet.gov.uk/libraries



Caring for people, our places and the planet

Who Let the Words Out?



Calling on all budding young poets for the Barnet Libraries Festival!

Join renowned multi award winning poet, author and performer Joshua Seigal for an energetic and interactive performance, as he shares poems from his award-winning selection of publications.

Expect fun, randomness and cats.

Arrive early to sign up for the open mic session and read your own poems!

Book tickets at:
<https://barnet-libraries.played.co/>
or via the QR code below.

Finchley Church End Library
Saturday 18 April 11am-1pm including a Q&A
and book signing session.

Open to children aged 7-11yrs only.



@barnetlibraries
#LearningLeisureLife
www.barnet.gov.uk/libraries



Caring for people, our places and the planet