



The Hyde School
High Expectations = High Outcomes

Early Years Parent/Carer Handbook



Welcome to The Hyde

Dear Parents and Carers,

Thank you for choosing The Hyde School for your child. We are delighted to welcome you and your family to our school community.

At The Hyde, we are proud to be a warm, inclusive and nurturing environment where every child is valued and supported to achieve their very best. We believe that strong partnerships between home and school are essential, and we look forward to working closely with you to support your child's learning and development.

This Early Years Parent and Carer Handbook has been created to provide you with important information about our Nursery and Reception provision. It outlines key routines, expectations and opportunities, and is designed to support you and your child as they begin their journey with us.

Starting school is an exciting milestone, and we are committed to ensuring that your child feels happy, safe and confident from the very beginning. Our dedicated staff team will be on hand to support both you and your child every step of the way.

If you have any questions or would like further information, please do not hesitate to contact us. We are always happy to help.

We look forward to getting to know you and your child, and to working together to make their time at The Hyde School a happy and successful experience.

Yours sincerely,

Ms Saving
Headteacher



About Us

The Hyde School is a two-form entry primary school with a nursery in Barnet, North London. We are a vibrant, inclusive community and part of The Hyde family, guided by our core values: Care, Forgiveness, Resilience, Respect, Kindness, and Joy. Our families come from around the world, speaking over fifty languages, which enriches our school.

We are proud to be a Flagship School for Inclusion, where every child is valued and supported to achieve their best. Our belief, *High Expectations = High Outcomes*, reflects our commitment to helping all pupils succeed with the right support.

With extensive outdoor space, we promote outdoor learning, play, and physical activity as key parts of development. Alongside academic success, we nurture creativity and curiosity, encouraging children to explore the arts, science, engineering, music, and sport, while embedding British Values in all we do.

Pupil voice is central to our school, and children are encouraged to share their ideas and help shape our community. We aim for every child to leave confident, kind, and resilient, ready to thrive in the future.



The Elliot Foundation Academy Trust (TEFAT)

The Hyde School is proud to be part of The Elliot Foundation Academies Trust (TEFAT), a successful charitable multi-academy trust specialising in primary education. TEFAT supports over 15,000 children across 36 schools in three regions: the West Midlands, East Anglia and London, where the Trust's Head Office is based.

Over the past ten years, TEFAT has developed a thriving and diverse family of schools, united by a commitment to improving outcomes for all children. The Trust is resourced by people who are passionate about making a difference and is relentlessly positive and ambitious in its approach.

Working alongside other TEFAT schools, we strive to make The Hyde School an even better place to learn. We place TEFAT's values at the heart of everything we do, sharing a commitment to equipping children with the knowledge, skills and behaviours they need to succeed in learning and in life.

TEFAT aims to nurture all children to become active and responsible citizens within their communities. While united by shared values, each TEFAT school retains its own distinctive curriculum, reflecting the Trust's belief in resisting a one-size-fits-all approach.

For more information about TEFAT please go to:
<https://www.elliottfoundation.co.uk/>



Our Values

We are part of The Hyde family. Together we value:

- Care – We look after each other, our school and the world we live in.
- Forgiveness – We take responsibility for our actions, we accept mistakes, learn from them and move on.
- Resilience – We aim high, embrace challenges and bounce back.
- Respect – We treat everyone equally with empathy and consideration.
- Kindness – We act with kindness and help others.
- Joy – We smile, laugh and celebrate our achievements



Early Years at The Hyde

Welcome to The Hyde School Early Years.

We are a safe, happy and caring learning community where every child is valued and supported to thrive. Our aim is to provide a stimulating and nurturing environment where children develop confidence, independence and a lifelong love of learning.

We pride ourselves on building strong relationships with families and working in partnership with you to ensure the very best start for your child.

Our Early Years setting includes:

- Nursery (ages 3–4)
- Reception (ages 4–5)

Children learn in a well-resourced indoor and outdoor environment, with the outdoor area acting as our **“third classroom.”**



The School Day

Nursery

- Morning: 8:30am – 11:30am
- Afternoon: 12:30pm – 3:30pm
- Full Day: 8:30am – 3:30pm

Reception

- 8:45am – 3:15pm
- Gates open: 8:30am
- School starts: 8:45am
- Gates close: 8:50am
- School finishes: 3:15pm

⚠ Late arrival after 9:00am is recorded as an absence.

The start of the school day is a very important time, when children greet their friends and staff and begin to engage in new activities. It is important that children arrive on time so they do not miss out on these valuable early learning opportunities.

We kindly ask that you collect your child promptly at the end of the session. Children can become upset if their parent or carer is late, so your punctuality is very important.

If you are unavoidably delayed, please contact the school office as soon as possible so we can reassure your child.

Please inform us if someone other than the usual person will be collecting your child. For safeguarding reasons, children will only be released to adults who are known to the school or have been authorised by you in advance.



Starting School and Home Visits



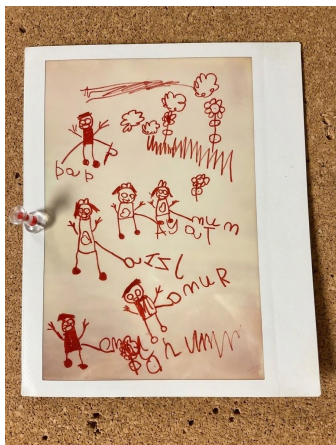
We will visit your child at home before they start in Nursery or Reception. We find that it is enormously beneficial for children to meet staff in their own familiar surroundings before starting school.



When your child begins school in September, the adults in their class will already be familiar to them following the home visit. This also allows us to learn more about your child, supporting a smooth and positive transition into school.



During the home visit, we will spend time playing with your child and getting to know them. It will also give you the opportunity to share important information about your child, ask any questions you may have, and discuss any aspects of starting school.



Settling into Nursery

On your child's first day, please bring them directly to the Nursery entrance. Their first session will begin ten minutes later than the usual start time. This allows staff to settle the other children first, so they can focus fully on supporting your child.

The first day in a new environment can be both exciting and challenging for you and your child. At first, your child may feel shy or may be reluctant to try new activities or join in with others. This is completely normal. We encourage you to spend time playing with your child and talking to them about Nursery and the activities they will experience.

We ask that you stay with your child for their first session in Nursery. After this session, we will talk with you about how your child is settling and decide together what is best for them. Your child may feel ready for you to leave them for a short time the following day, or they may benefit from you staying a little longer. Every child is different, and we are flexible in our approach to settling in, ensuring we meet the needs of each child and their family.

When you do leave your child for the first time, please ensure you explain what you are doing and say goodbye. It is also very important that you return on time, as being late can cause your child to feel anxious. Initially, you may be asked to collect your child earlier than the end of the session, as many children are not yet ready to stay for the full duration, including group activities such as story time.



Nursery Day

Nursery session begins with children being welcomed at the door by staff and encouraged to self-register by finding their name card. Children are then free to choose which activity they would like to take part in.

Parents are encouraged to come into the Nursery with their child to help them find their name and choose their initial activities. At the end of the session, children take part in a short carpet time, usually including a story and singing.

Children staying for the full day will need to bring a healthy packed lunch, which they will eat during the lunchtime period in a separate room to the Nursery.

You may choose whether your child has a packed lunch or a school meal. School meals are charged at £2.55 per day.

If you provide a packed lunch, please ensure it is healthy and does not contain nuts.



Settling into Reception

Reception children will start school gradually over the first few weeks of the Autumn term. Home visits will take place for all children during the first week of term.

Children starting in Reception will initially attend school for mornings only. Their time in school will then gradually increase over the first few weeks to support a smooth transition into the new environment and routines.

Most children joining Reception will have attended a Nursery class, either at The Hyde or elsewhere, and will already be familiar with aspects of the school environment and separating from their parents.

We ask that you come into the classroom with your child for the first 10–15 minutes of each day, before leaving them with the Reception staff. This helps children settle calmly and confidently into their day.



Reception Day

The Reception day begins at 8:45am. You are welcome to come into the classroom at the start of the day to look at the activities available and spend a few minutes playing with your child.

At approximately 8:55am, the Reception class teachers will gather the children on the carpet for a short teaching session. At this point, any remaining parents will be asked to say goodbye to their children. This teaching session will last for around ten minutes.

Following this, the doors between the classroom and the outdoor area will be opened, allowing children to move freely between the indoor and outdoor learning environments.

During each session, staff will lead focused activities both indoors and outdoors. In addition, children will take part in two further whole-class teaching sessions throughout the day. Alongside these activities, children will participate in guided reading sessions each week.



The Curriculum

Play

Children learn best through play. Play is children's work - it is how they begin to understand themselves, their relationships with others, and the wider world. Through play, children explore, investigate, experiment and build on their experiences. Play provides opportunities to practise skills, develop ideas and solve problems. It also enables children to act out real and imaginary roles and situations, helping them make sense of the world around them.

Talk

Talking is one of the main ways we communicate. Through talk, children organise their thoughts, develop their understanding, ask questions, and express their feelings and ideas. It also supports the development of imagination. Because talk is so important, we provide many opportunities for children to talk with both adults and their peers throughout the day.

Children also learn through their senses - by touching, smelling, and observing people and materials around them. Handling objects and exploring resources helps children build their understanding of the world.

Young children often learn by copying others. In the Early Years Foundation Stage, we provide real-life experiences and meaningful resources to support this learning. For example, in the writing area, children may use office equipment such as hole punches, diaries, staplers and notepads to help them understand the purpose of writing. In the home corner, you may find magazines and cookery books to support role play and communication.

The Curriculum

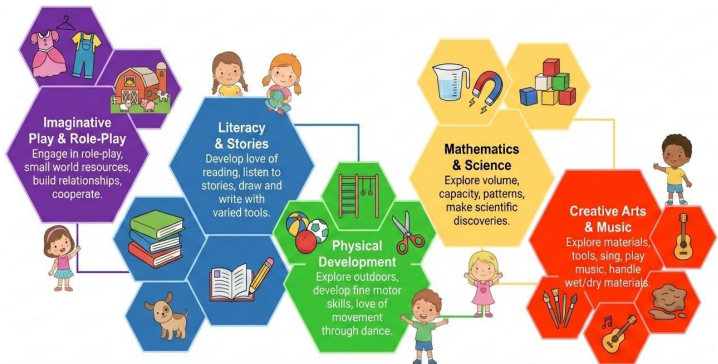
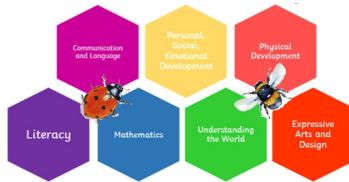
Areas of Learning

The Early Years curriculum is divided into three prime areas of learning and development:

- Personal, Social and Emotional Development
- Physical Development
- Communication and Language

and four specific areas of learning and development:

- Literacy
- Mathematics
- Understanding the World
- Expressive Arts and Design



Planning and Record Keeping

All learning opportunities in Nursery and Reception are carefully planned. Staff observe the children and note their interests and development so that they can plan to extend each child's knowledge, understanding, skills and attitudes.

This may be done by:

- Adding to or adapting the learning environment
- Introducing ideas or activities directly to the children
- Joining in with children's play to support and extend their thinking

Children develop their attention, confidence and ideas when they are given the opportunity to explore and engage in sustained play.

We use an online assessment system called **Tapestry**. When your child starts in our Early Years, you will be set up with an account so that you can share in your child's learning journey and key information to support you at home.

You will receive an email notification when an observation is posted. Staff regularly record observations for each child, noting their development and planning next steps in learning.

We hold two parents' meetings with you throughout the year to share these observations and discuss your child's progress.

You will also be able to view and comment on your child's Tapestry profile, as well as upload observations of any significant learning, experiences or achievements at home.



Parental Involvement

We know that by working closely with families, each child's development and education is enhanced. We encourage our families to be involved in as many ways as possible.

Please come and spend time with us in school, whether sharing your skills, reading with children, or supporting with visits and activities.

We welcome open communication and encourage you to share any anxieties, concerns or achievements with us. The door is always open.

Children love to share their interests and ideas from home. We value these contributions and use them to support and extend their learning in school.



Clothing



Nursery

If your child is starting in Nursery, please choose clothing that is easy for them to manage independently, particularly when using the toilet.

Elasticated waistbands, simple fastenings and loose-fitting clothing are especially suitable.

Children should wear comfortable clothing that allows them to take part confidently in all activities, including messy play and outdoor learning.

Reception

Reception children are required to wear a school uniform, which can be ordered online.

Children should wear comfortable, practical clothing suitable for active learning. We recommend closed-toe shoes with Velcro fastenings to support independence.

General Reminders (All Children)

- Children are very active, so **closed-toe shoes with Velcro fastenings** are recommended
- If your child has pierced ears, they should wear **studs only** (no hoops) for safety
- Please provide a **named pair of wellington boots**
- Children should have a **bag with a named change of clothes**, kept in school
- **All clothing must be clearly labelled** with your child's name
- Aprons are provided, but **messy play is part of learning**, so some spills may still occur

School Uniform

At The Hyde School, we are fully aware of the cost of living pressures and encourage parents to purchase school uniform that is affordable for their family. Parents have the choice to either buy uniform from any high street shop or supermarket in the school colour of red, or to purchase uniform with The Hyde School logo from our official supplier, MAPAC.

You can view the uniform options and make purchases via the MAPAC website: [The Hyde School Uniform – MAPAC](#).

In addition, families with children eligible for Pupil Premium are entitled to one free school jumper/cardigan per year.

Uniform orders can be delivered either to your home address or to The Hyde School, where you can collect them from the School Office.



Additional Information

Fruit & Milk

Fruit is provided daily for all children in the Early Years. If you would like to contribute additional fruit for the children to share, it would be greatly appreciated.

Children under the age of five are entitled to receive free milk each day. Milk is provided through **Cool Milk**.



Book Bags and Reading

Children gain great enjoyment and benefit from sharing books with adults. Talking about the pictures and reading stories together helps to develop their understanding of books and supports early reading skills.

Reception children will also be given an additional reading book online by the teacher, carefully chosen to support their developing reading skills.



Safeguarding and Child Protection

At The Hyde School, keeping children safe is everyone's responsibility. We follow Keeping Children Safe in Education (KCSIE) 2025 guidance to ensure all pupils are protected and supported.

All staff and volunteers are trained to recognise signs of harm or risk and know how to respond. We encourage children to speak up about anything that worries them and take all concerns seriously.

We work closely with families and external agencies to provide a safe, supportive, and nurturing environment, helping every child to thrive academically, socially, and emotionally.

Key Contacts:

- **Designated Safeguarding Lead (DSL) and Prevent Lead:**
Philippa Saving, safeguarding@thehydeschool.co.uk
- **Deputy DSL(s):** Nisha Mehta, Lisa Pratchett, Charlotte Lee Foo Pin, Zareen Oozeerally and Spencer Guy
- **Trust Safeguarding Contact:** Caroline Oliver

Emergency & Support Contacts

- **Police:** 999 (emergency), 101 (non-urgent)
- **MASH (Barnet):** 0208 359 4066, MASH@barnet.gov.uk
- **Children's Social Care (Brent):** 0208 937 4300 (Option 1)
- **NSPCC Helpline:** 0808 800 5000
- **ChildLine:** 0800 1111
- **Non-urgent school concern:**
safeguarding@thehydeschool.co.uk (checked once every 24 hours when school is closed)

Special Educational Needs (SEND)

At The Hyde School, inclusion is at the heart of everything we do. We provide an engaging, accessible curriculum for all pupils, while offering tailored support and adaptations for those with higher levels of need.

We believe that all children benefit from learning alongside peers with different abilities. This helps children with SEND develop skills and confidence, while others learn empathy, respect, and understanding.

Our school community is diverse, with pupils and staff from over fifty different language backgrounds, including British Sign Language, and many faiths and cultures. This diversity enriches learning and life at The Hyde.

We are proud to have been awarded the Flagship Award for Inclusion for 2025–2026, recognising our outstanding commitment to inclusive education.

For more information about our SEND provision, parents can contact our SENCo:

SENCo: Zareen Oozeerally

Email: SEND@thehydeschool.co.uk



Barnet Local Offer - For more information about <https://www.barnet.gov.uk/children-and-families/our-special-educational-needs-and-disabilities-information-advice-and-6> s, and resources for children with SEND in Barnet, parents can access the **Barnet Local Offer**:

<https://www.barnet.gov.uk/children-and-families/our-special-educational-needs-and-disabilities-information-advice-and-6>